

Rallyesim regulations

SEASON 2023

RALLYESIM.com

SIMULATION DE RALLYE

CHAMPIONNATS EN LIGNE

PREAMBLE

No one is supposed to ignore the regulations.

This regulation will be deemed to have been read and approved, then a person will start to a formal session's rally. A formal session is an event counting towards one or other of the championships organized by [Rallyesim](#).

All participants will be held responsible for having read of this regulation.

RScenter, *RSRBR* and the [Rallyesim](#) site, are the property of the [ASSOCIATION RALLYESIM](#).

Any person who wants to use one of the programs, or space is the property of the [ASSOCIATION RALLYESIM](#) for a different purpose from those listed in this regulation, can and should make the request from one of his [Administrators](#).

[Rallyesim](#) products, are, and will remain completely free, as long as the [ASSOCIATION RALLYESIM](#) will be able to meet its own needs thanks to donations from the members of this association. For more information on the operation or the membership in this association, please contact a member of the bureau. However, membership in this association is not required to [make a donation](#), and thus participate in the survival of the Championships or site **Rallyesim**.

Richard Burns Rally accompanied by the **RSRBR** mod is a game demanding in terms of resources for computers, and graphic quality for graphics cards. **Rallyesim** cannot be held responsible for problems related to insufficient resources that can cause a corrupt operation. Laptops are often limited in scalability, it is recommended [to inquire about minimum system requirements](#)

1. INTRODUCTION

Reading of the regulations

We strongly recommend to carefully read the regulations before enrolling at the Championships. You will get idea of how organized the rallies throughout the year, and so you can make the most appropriate choices depending on your goals.

The year 2021 is in the continuity and Rallyesim RSRBR.

The new opus RSRBR will offer us a little less championship than in 2022 but they remain close to reality, thanks to the development originally conceived by Papy Jim.

Some championships will take place only with cars NGP (New Generation Physic):

- VMRC Malagasy Championship
- European Rally Championship
- Alpe Adria Rally
- Rally Legend Championship

Some championships will have a mix between NGP and classic physics

- Belgian Rally Championship
- FPAK Campeonato de Portugal de Ralis

All of these national championships are organized by local representatives, under the tutelage of Rallyesim administration, which supports collations that result.

The bulk of the championships organized by the FIA (Federation Internationale Automobile), and the FFSA (French Federation of motor Sport) and various national championships, will be taken up and adapted to close to reality and opportunities of **volunteer developers**, to provide even more immersion and various sensations.

There will also be a ranking of the French drivers, which will be cumulated on the whole of the results in Cup, CFR Tarmac, 2nd Division and Gravel, on the basis, always coaches "Career".

A career ranking will be made for separate trials in Realistic and Reduced if and only if the drivers have checked in their career choice.

2. REGISTRATION

- **2.1 - General registration**

The Championships registration is done by simple free subscription to account [RSRBRLive 2023](#) (site dedicated to **RALLYESIM** Championships). The names and numbers of the drivers will not be changed after subscription. Registration will be from **RScenter**, program network dedicated to Rallyesim Championships and will be validated by confirmation from an e-mail sent to the e-mail address indicated at the time of registration. If In the event that the activation of this account does not work, it may be studied on request on the topic dedicated to registration problems [registration problems](#).

- **2.2 - Validation of entries**

Someone with the video game *"Richard Burns Rally"* in PC version and latest versions **RSRBR** and **RScenter** required (**mandatory**) may participate in the 2023 Championships offered by **RALLYESIM**. You will be asked a pseudonym (Must be the same as on the RALLYESIM forum), a pilot number, a password, a country of belonging, and a valid Email address.

The purchase of multiple accounts by the same person is prohibited.
The substitution of one account by someone other than its original creator also.
Any attempt to misuse of multiple accounts by the same person will be punished.

The choice of your car can be done later by [editing this profile from the site RSRBRlive 2023](#).
Entries are free throughout the season.

- **2.3 - Forum**

A forum dedicated to the life around **RSRBR** and its Championships is available.
[It is advisable to register](#), and to go to regularly view communicated any information particularly about the Organization of these Championships and the life of the teams and stables.
You will also find the developments of **RSRBR**, that they are required to install, or optional. **Any installation earlier than required by the Championships will be denied entry into the formal sessions.**

- **2.4 - Specific entries**

Specific to a Championship registration is done by simple choice of a car dedicated to this Championship.
You have [to edit your driver profile](#), make a choice of car for the Championship chosen among those proposed, then validate your choice by accepting the change of profile. The proposed cars will be those authorized by each specific regulation of the Championship said.

The choice of the car dedicated to a Championship remains free and unlimited as long as 1^{era} this Championship event has not started. You will find more information about the possibilities of change of cars on each of the specific regulations. These specific rules are available [from this page](#), in French, English, and other languages for some Championships. Here you will find all necessary information for each Championship and the specifics that will make it unique and different Championships each other.

- **2.4.1 – Spécificités WRC**

The official teams will be allocated first to drivers listed in the career of the 2023 WRC overall standings.

WRC 2017 and 2020 cars are only allowed and reserved for this championship. Championships authorising other WRC cars cannot allow WRC 2017 or 2020 cars in their championship.
The 2017 and 2020 WRC are also accepted in the French tarmac championship, but they do not score points.

3. PARTICIPATION IN THE CHAMPIONSHIPS

Is called Championship, a set of tests that are part of the same competition. All rankings of the Championship events, gives rise to a general classification of the Championship said.

- **3.1 - Commitments to the tests**

- No mode of commitment on no test is required. The simple choice of a car for the Championship concerned enough to participate in this Championship event.
- Any participation in a test, just to be included in various rankings of the event and the Championship.

- **3.2 - Stalls**

Foolproof started should be completed, and a few are events that will disrupt its smooth running. Leave an event started, will be synonymous with abandon (**DNF**).

It is not possible to start or resume a test previously left before his term.

The only case considered for a rally, WINS or the driver has not completed any meter on the 1^{er} timed sector (0% progress). If a connection problem is encountered at the beginning of the rally, it is possible that RSCenter leaves the game by issuing a "Restart code." You will find this code in the folder of the same name in the root of your game. This code is to be filled [here](#).

>> RESTART A RALLY

There is **ONLY ONE CONDITION** to be able to restart a rally :
If RSCenter kick you off the game with a message error with a "restart code".
This message can only appear after the start of the stage 1 of a leg.

Il n'y a qu'**UNE SEULE CONDITION** pour être autorisé à recommencer un rallye :
Si RSCenter vous sort du jeu avec un message d'erreur qui contient un "restart code".
Ce message ne peut apparaître qu'au départ de la 1ère spéciale d'une étape.

Number : **19**
Login name : **Beu-C**

Choose the rally you want to restart and enter the restart code given by RSCenter

Choisissez le rallye que vous souhaitez recommencer et entrez le code restart donné par RSCenter

Rally :

Restart code :

If this code does not work, and that the rally is over to you after closing and reopening RSCenter, then you will not be able to take the start.

4. BEHAVIOR

- 4.1 - Respect for others

Any person registered shall comply with the basic rules of courtesy and kindness. It must not be abusive and aggressive actions and words. Sanctions will be taken if these legitimate rules of conduct were to be violated. The administration will meet and decide the sanctions according to the gravity of the acts. The sanctions may be a simple warning, exclusion to one or several weeks of tests, or the permanent banishment of **RALLYESIM** and/or Championships.

It is recalled that these Championships are organized by volunteers, and that as a result, no inappropriate conduct will be tolerated.

- **4.2 - Behavior "rallystique".**

RALLYESIM Championships are meant to be virtual rally competitions.

Events in 2014 push RallyeSim administration to modify Car repair system in official session.

From now, Car Repair will be limited with a specific limit per championship, so each championship manager have to give us an answer as soon as possible. This limit can be set to 0 to 3 use of Car Repair PER LEG.

This is how Car Repair will work now:

- If a driver choose to repare his car, he will have to run the stage which was skipped until 2014 season. Time of this stage won't be calculated on base of "best class time + 3 minutes", but "time of driver on this stage with "new" car + 3 minutes"

- If a driver choose to repare his car, and he is retired from this stage, he will get "contractual time + 3 minutes" and his also retired on all following stages of the leg.

- For championship with Team, retiring will be counted before Car Repair.

In addition, participants are asked to adopt a rally driver behavior, not "pilot kamikaze" desperate to reach the finish quickly.

Failure to follow multi-turn or spin-off tracks will result in a DNF + Fixed-price conditions observed on Bergheim, Castrezzato, SS Daniel Bonara, PTD Rallysprint, Courcelles Val d'Esnois, etc ...

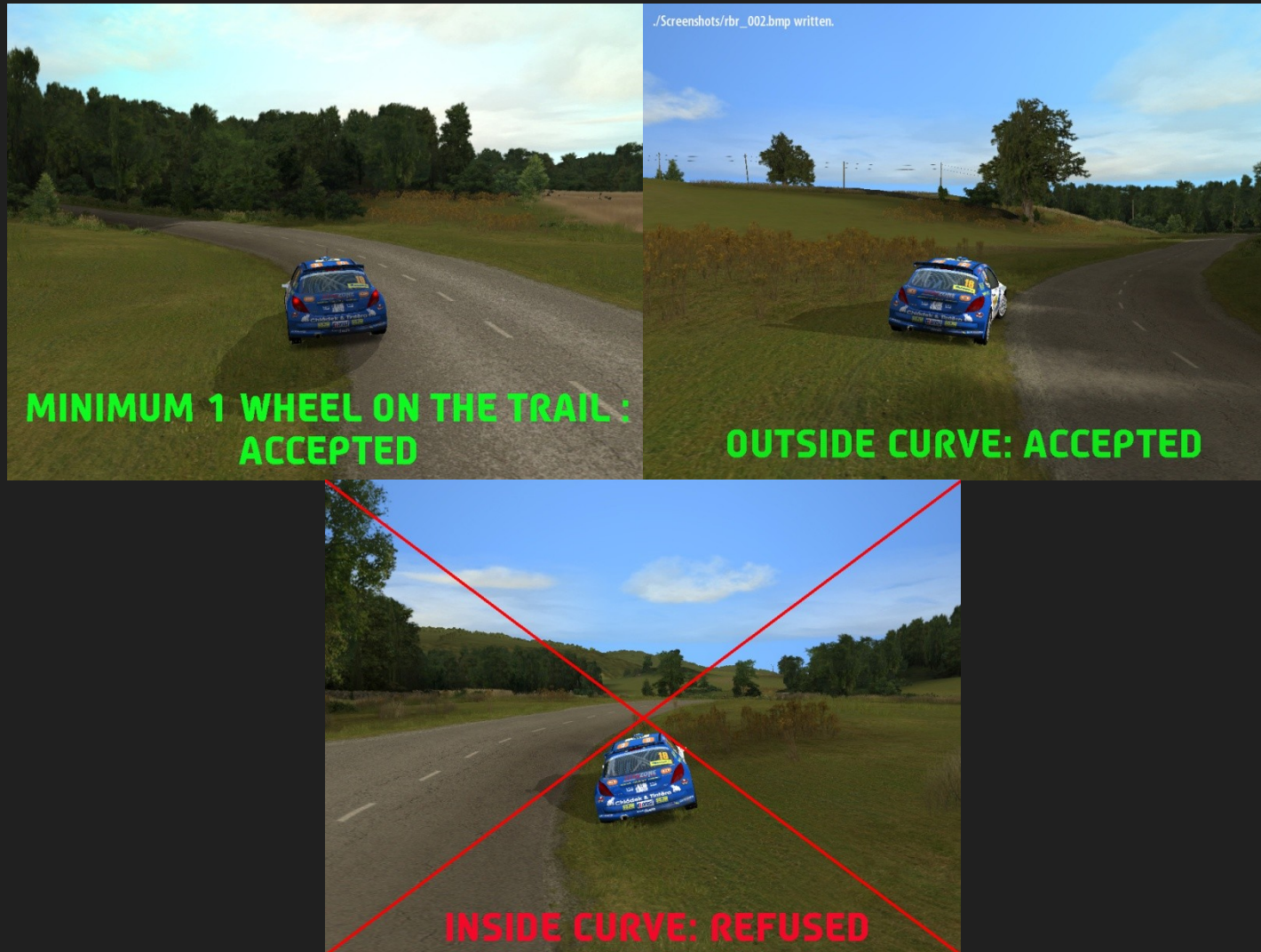
SEE HERE :[Listing Spéciales standards/Standard tracks](#)

The supports on the barriers, metallic, circumvention of elements of decors are strictly prohibited.

This type of driving will no longer be tolerated and will lead to the exclusion of the driver for any similar arrival regardless of the special stage and will result in the arrival of Lyon-Gerland, East West II, Greenhills etc. A DNF + lump sum.

Regular checks will be organized in order to restore order and the smooth running of the Championships.

Any participant not complying to requests that will be made each week [on this public page](#), takes the risk of severely sanctioned, even of not being able to continue his season. An Email will also be sent to the address provided in the registration form RSRBRlive2023.



***The cuts of turns are prohibited. Be sure to always have at least one wheel on the track.
All recognized voluntary cuts by Commissioner college will be punished of a cancellation.***

- **4.3 – Car RSRBR settings**

- Each this car in **RSRBR** has its own "physics". Some organs such as differential pairs, anti-roll bars and tables can be limited, see locked. These locks can be different according to the mods and used cars. Be sure to not bypass those blocks. To be accomplished, the safest is to regulate a car from the default settings imposed by each mod and each car. [One of your settings control](#) utility is available on the forum.
- However be sure to be careful during each " update " required (mandatory). A notification on the content appears when it is installed, cautioning on physics have suffered modifications.

5. MANDATORY UPDATES

- **5.1 - Updates**

Each participant is responsible for its installation.

[Updates, patches and Addons](#), are regularly available for download. They can regulate operating problems, add new cars, new special, necessary for the proper functioning of your installation the updates will be taxed at the launch of an official session, while the addons or patch (known Updates "intermediate") will not be.

Failure to follow these updates is the responsibility of each.

The incidents in session, independent of RSRBR and/or RScenter will not be taken into account.

A computer becomes a virtual car, and each driver is responsible for his mount.

Will be considered as mandatory, an update called " **update** ". It will change the version of your installation. The version of each installation will be detected at the entrance of the sessions. If this version is earlier than required, the session implementation will be impossible.

- **5.2 - Addon**

The **addons** are optional, but nevertheless important according to their content. It is therefore recommended to follow their official and consider whether it is necessary to install, depending on whether the failures that they correct you appeared. These addons will be [available on the forum](#).

The administration will arrange to prevent these addons or patches. It is the duty of each keep it informed.

In any case the administration cannot be held responsible for problems for which a addon or patch will be set up in advance.

- **5.3 - Troubleshooter**

[A troubleshooter](#) is intended to detect any abnormalities in your installation, vital or benign. This utility is not included with **RSRBR** or with the updates.

It will help to target the problem and will give administrators information to assist you in addressing these problems. It can detect errors in **RSRBR**, but on the general operation of your computer and its operating system. Execution of this program automatically will direct you to its own update, if the version installed on your computer is not the last.

6. CALENDAR & ROADBOOKS

- **6.1 - Global calendar**

A [general timetable](#) is available. It will guide you on the program of the season, taking all of the calendars of all championships organized by **RALLYESIM**. This calendar may be incomplete at the beginning of the season, pending some actual calendars.



- **6.2 - Roadbooks**

A roadbook is the roadmap dedicated to a rally. It gives the following information:

- Week during which a rally will take place.
- Championship for which the rally will be performed.
- Adjoining subleagues.
- Mods travelled.
- Special buckles, service parks...
- The weather won't show in the roadbooks or on the forum. It will be available to the activation of the sessions is the Sunday night before the running of the rally by clicking on active sessions.

- **6.3 - Dissemination of the roadbooks**

The roadbooks are available a few days or weeks before each rally.

This deadline is set by each specific regulation, according to the importance of the competition with regard to the calendar. You will find these roadbooks on the page " [live sessions / This week](#) " RSRBRLive 2023.

7. FORMAL SESSIONS

Are called " formal sessions " (live sessions), the sessions being part of one or other of the Championships.

- **7.1 List of the official sessions**

You will find each week on the page "[live sessions](#) " all rallies planned for the current week. By clicking on a rally, or a day (leg) rally, details out (road book) you will be provided. It is also the only place apart from **RScenter** that can offer information about the weather for the rally.

8. RUNNING OF A RALLY

- **8.1 Enter a session's rally**

A rally is accessed from **RScenter**.

In the interface, you have the choice between several buttons:

- « [Alone / Solo](#) »
 - as its name suggests lets you choose a car, a special, weather, surface... etc., and play alone and for fun.
- « [Public](#) »
 - allows you access to rallies organized by the users of **RSRBR**, rally created from **RSRBR Live**.
- « [Championship / Championships](#) »
 - to participate in the different events organized by **RALLYESIM** and in connection with the Championships.

To see the list of official sessions you did not yet click on "[start a rally online](#)".
Make your choice of session, and then "enter".

Enter will be irreversible

At the entrance of an official rally car dedicated to the Championship is then automatically loaded. Unable to start with one car other than those laid down in your driver profile.

A choice can be proposed, if the Championship allows you (WRC, Cup of France of the asphalt rallies)

The RALLYESIM Organization cannot be held responsible for possible errors of the drivers concerning the coaches imputing their stables, Teams or Career as soon as a week is started from Monday 00:01. No modification will be made, the pilot is responsible for his own choices.





- **8.2 Starting the rally**

It was incorporated an icon to view the status of its connection RSRBR in 2014.



If this is not effective it appears in red. In this case, it is necessary to refresh icon right Go.

Following a problem with the connection control, it is advisable to deactivate it

In low connection, it is possible to disable the "Connection Control" from the settings RScenter. This procedure does not cut the login control, but simply the process control at very frequent intervals if a connection is available or not, which can sometimes afford to do his rally with an unstable connection. Nevertheless, an internet connection is required to participate in events "online"

- The entry in a session usually requires a time setting of your computer in step with that of the game server. Accept this update that will have no influence on the Organization of your computer. The game server is indexed on a high-quality web clock.
- At your entrance in the session, a countdown will appear, approaching more or less 5 minutes and a grey button (inactive)) indicating "standby". Be sure to make your choice of tires for the special loop that will be initiated.
- As soon as the count has elapsed, this button is no longer grayed out (active) indicating "GO". "GO" is accompanied by a sound signal "blinggg" you announcing the departure may be given 10 seconds later, reported by a second "blinggg". You will then have one minute to click on GO > the 1 special^{era} will be so loaded in the conditions given by the road book. And your choice of tires blocked for the whole of the loop.
- Once the "GO" activated by your care, the special will be loaded. You will have access to the RBR classic menu, allowing you to load or create your tuning car.
- Then the special run.

If all goes well and nothing disturbs your race, you will be prompted at the end of each route timed, save the replay of this course. This option is not one.

Registration is required for each route (Special)

You will then be back on the RScenter interface with again a countdown for the start of the next special.

This count will become random, since the departure may be anticipated as desired, **but never moved beyond the initially programmed by RScenter.**

Tips:

- Name your replay files correctly in order to be able to identify them among reruns of other rallies. Simply rename a file after the fact alters the original date of creation, and can play in your disadvantage if you wear claim later. The date of registration of a file is an important information.
- Example record: you make the rally the Var 10 on 2 legs.
- Save your replay as follows: **ES1 / 'name of the rally' / LEG No. / ESS No.**
*The number of characters is limited by RBR. Be specific, short, but **organized**.*
- Frequently empty your folder of repeats. Can interfere with future recordings. Keep its files out of the folder "Replays" of the game.
- It is recommended to leave a rest period to your computer hardware. **RBR** is computationally expensive, primarily for graphics cards. Follow the special no waiting time can be harmful to the good running of a rally demanding.

If the 1 special^{era} was not part of a loop of several special, the choice of tyres will be possible.

Otherwise, it would be the next service Park > tire strategy.

- The launch of each task will be done in the same way until the last.
- In the case of a rally taking place on several days, you can follow the days if you want, smoothing by the button "**start a rally online**".
- **8.3 - Damage level**

Many Championships will use the damage "**Realistics**" ----> [see specific regulations](#) of each Championship. RSRBR does not have consistent damage, but be aware that if damage you your car, **this is necessarily because a steering fault was made originally.**

- **8.4 - Cumulative damage**

The damage report will be active on all Championships.

- **8.4.1 - The report of the damage in a few words**

Some damage will be not be repaired with assistance as requiring an unacceptably long response time in the real world. On this principle will not repaired:

- Front - Central - rear differential
- Hydraulic system
- Electrical circuit

In the following leg, damage will be repaired.

For the engine damage that you suffer without hitting anything : you are reminded, that the intensive use of the brake continuously brings a forcing of the engine that will rise in temperature, and that will eventually get out of the race.

In the case of damage without abandoning the special, several options will be offered in RSCenter:

- Continue the rally without repairing ----> "**GO**"
 - Continue repairing, and accepting the "Car repair". In the case of damage without abandoning the special, several options will be offered in RSCenter:
 - Continue repairing, and agreeing to the following special ride with a time of 3 minutes + ----> "**Car repair**". This option will require you to drive the next stage, but with a penalty of 3 minutes on the time you realize.
- This is not RSCenter that calculates the time, but the rankings calculation system that can only be made once the rally ended,

or the following Monday. RSCenter, he can not do better than adding a temporary fixed time roughly 5 minutes longer than the time of the special. This fixed time will be adjusted when establishing rankings..)

- **Example 1** : (special 4 loop).
 - ESS1: Nothing to report > time taken into account.
 - ESS2: Mechanical damage > time taken into account / choice of button "**car repair**".
 - ESS3: The special is rolled normally but time taken into account + flat 3mn penalty.
 - ESS4: Nothing to report > time taken into account and a combination of the time.
- **Example 2** : (special 4 loop).
 - ESS1: Nothing to report ----> time taken into account.
 - DNF: Mechanical damage ----> time taken into account / choice to continue without repairing.
 - ESS3: Abandonment due to overheating of the motor ----> lump sum time.
 - ESS4: "Car repair" ----> lump sum time...+ **lump sum time on all the remaining in the race day**.

- **8.4.2 - Aborting a special > the "super rally" rule**

The "Super rally" rule is applied in the races with 2 legs and more abandonment in a special. Lump-sum time are assigned to each special remaining of the leg after the abandonment. This rule allows you to resume the rally on the leg with the resumption of the cumulation of the time.

Lump sum time, whatever the Championship, will be the following:

Best time set by a driver of your category* + 3 minutes

* A category is a rolling driver set for the most direct classification (class, under championship, etc.).

- **Example** : (special 4 loop).
 - ESS1 : nothing to report ----> time taken into account.
 - ESS2 : abandonment ----> lump sum time.
 - ESS3 : time flat car abandoned in the previous (DNF).
 - ESS4 : time lump sum because abandonment in DNF.
- **Next day:**
 - ESS5 : resumption of the rally and accounting of the time... etc...

Note that if during a special, whether during a rally leg single or multiple legacy especially in this case, you had to give up in the last leg or even in the last stage of the last leg you DNF will be for the entire rally.

• **8.4.3 - Incorrect race time**

It can happen that your time on **RScenter** are wrong, or that (retired, skipped, in progress) status is false. ("In progress" often means that **RScenter** has detected that you have completed the special).

2 solutions are at your fingertips:

- The only time start to the day, without any intervention on your part to the arrival of the next stage.
- In the case or the action failed, **do leave not the rally**. You can send your time by another utility named "**Send times**" also in the 'live" tab of **RScenter** **at the end of the rally**. It is not necessary to operate this button before the end of the last special, since it will look for times in the file 7z rally that register at the end of the rally.

If finally none of these work, there is the possibility of a person in charge of these updates from time on the subject of the rally after sending your 7z by "SendReplays", on request, by indicating the link to the control file SendReplay you will have contact.

Sanctions against people abusing these requests and did not take the time required for the reading of this Regulation may be taken.

- **8.4.4 - SendTimes**

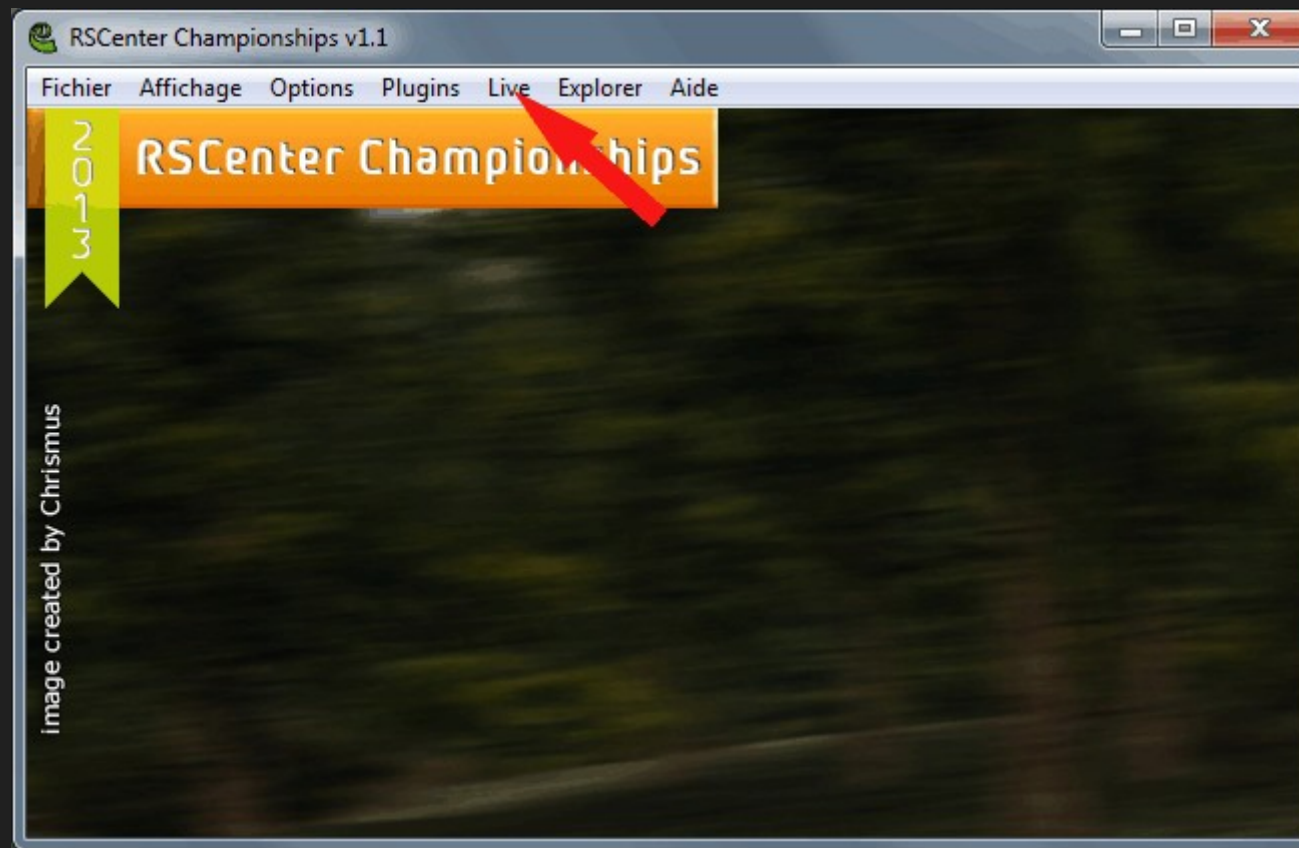
"SendTimes" is a utility built into **RSRBR** for update of the time noted as erroneous in session. It is accessible from RScenter, at the end of each leg.

At the end of the session, and once RScenter closed, you can activate "Send times". You can verify that this utility has properly done its [viewing this page](#).

If not, send the entire race (replays +INI + 7Z + HTML) files using "Send times", if asked you respond to your claim and notify a responsible business on the topic dedicated forum championship rally RALLYESIM when this is done.

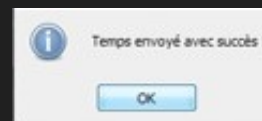
- **8.5 - How to use SendTimes:**

1. Click on the designated by the arrow icon.

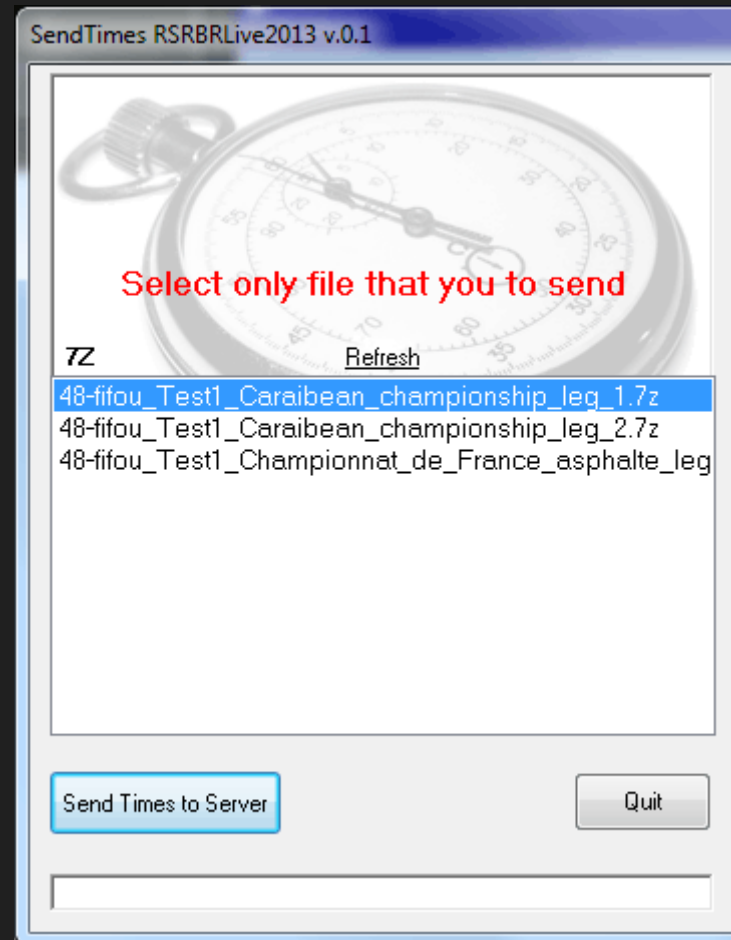


2. Opens a window with different choices. Select the one that suits you for example "[send time of the task on the server](#)".

3. A confirmation will appear once this will be corrected.



4. You can also send the time for a full rally in this case click on "[Live](#)" and then "Send times".
5. Select file [7z](#) bearing the name of the rally you want to update. Click on the button "SendTimes to Server".



This manipulation can be done only once by rally or race day, and this, during the rally week.

• 8.6 Participation points

Addition of participation points according to the number of kilometers traveled on a rally (special completed)

If the rally is over = 2 pts per kilometer traveled (example: 98 km x 2pts = 196 participation points instead of 2 previously)

If DNF on the rally = 1 pts per kilometer traveled (example: 1st finished special (5 kms), 2nd finished special (9 kms), abandonment in the 3rd special, therefore 14 kms covered x 1 point = 14 participation points)

Visualization of the calculation in the rally results [here](#)



By hovering the mouse over the RallyeSim points total you have the calculation

Class	km done	RallyeSim	Status
Scratchs	Participation pts	Points	
0	42,6 km	496 pts	-
0 pts	86 pts		

(Pts Gen + Pts Class) * Coef. RS + Pts Scratchs + Participation = (48 + 34) * 5 + 0 + 86

9. STABLES

- 9.1 - Presentation of 2023 championships

After 10 years of existence of the RALLYESIM stable championship, the league principle will be stopped in 2021. With 24 stables at the end of 2018, the current organization has reached its limits. Therefore, there will be one single league including all stables.

Each team will consist of 10 drivers who will take part in 2 rallies a week.

However, only the top 8 results out of the 10 drivers will be retained.

Regarding team checks in 2023, there will be only 2 rallies checked with a maximum of 6 drivers per rally.

- **9.2 – General procedure**

2 rallies per week will be offered for the stable classification for the whole season. They will be represented as follows in the [general schedule](#) :



The Rallyesim organization will endeavor, as far as possible, to propose a rally in Reduced and one in Realistic each week to allow each rider to choose his rally according to his preferences. There will sometimes be 2 rallies in Reduced and sometimes 2 rallies in Realistic.

The championship period will start as usual (beginning of the season in week 3 of January) and will stop week 50 without interruption.

The rankings "STABLE" will be dissociated between the different Leagues. Even if the drivers of each League will continue to compete together, on the current rallies, the attributions of the points of Class, Group, etc ... will be counted in rankings "stable" separated, of type Stable League1, Stable League2, etc.
There will be, for each rally, so many winners, 2 ° 3 °, etc., of class, group, etc., than of Leagues.

• 9.3 - Organization of the stables

Stable organizer > [Olival](#)

Any request, concerning the stables manpower, will have to be addressed on the [subject dedicated to the stables](#) (request of integration by a pilot, confirmation of integration by his manager, request of dismissal, wish of resignation ... etc.)

Each application must be accompanied by the exact names and numbers of the drivers and the exact name of the team.

A team consists of a maximum of 10 drivers who roll in order to accumulate points in a team ranking.

Each driver is free to drive with the cars of his choice and to report points according to the groups and classes of his cars.

Each driver will have 2 opportunities to belong to teams throughout the season. If he leaves a stable for the 2nd time, He will not be able to integrate a 3rd one.

The conditions required for the creation of a stable are specified on the [1st post of the subject dedicated to the stables](#).

Each stable will have [its assistance park](#) in the forum dedicated to the championships as soon as the required conditions of creation are fulfilled.

• 9.4 - Role of manager

- Manager, team spokesman is the single point of contact of the Rallyesim administration. He informed the different possible between the Administration and its drivers.
- It is **owner** of his team, as well as the ranking acquired during the previous season. Only, can engage his team the following season in the league or it has been described as. If the manager does not continue in his stable the following year, he will appoint a replacement who will take the team to their account for the survival of this team.
- He and he alone who will be able to validate the integration of a new driver. In the event of sanctions relating to audits, he debated with the offending driver.
- Manager debate rally stables with its pilot schedules, ensuring that they check off each week.

- **9.5 – Organization of drivers**

- The number of rallies by driver for the team classification will be limited to 1 per week. Drivers cash for the team classification will be also limited to 6 drivers per rally. The drivers must agree to divide the possibilities of gains points on an average of 4 selectable rallies a week, these rallies being more selectable once they are started, either 0:01 every Monday for rallies this week.
- If the pilot quota is exceeded on a rally, only the best 6 results will be retained. The following drivers will count for their personal rankings, but not for their team. **It will be impossible to make an another "Rally Team" as a replacement. It will be also impossible to modify a rally that the pilot wanted to select for his team, but for which he will have forgotten the selection beforehand.**

- **9.5 a- Dismissals**

- The manager will be able to dismiss one of its drivers.

- **9.5 b- Resignation**

- Any driver is free.
- **9.5c- Acquired points**
- Points acquired by a pilot within a stable, will be whatever it is kept within this stable. Whether licensed or who has resigned, points will remain in the stable of membership at the time of the rally.

10. Rankings

The rally rankings will be available within 7 days following the end of each event. You will find both the classification of events as adjacent to these trials Championships rankings.

All collations are grouped together on the page "[Official results](#)" on [RSRBRlive2023](#).

For all the Championships, all points assignments will be as follows:

(Number of runners in the general / number of categories) / 2 = Quota

If the quota is reached, then all points are distributed. Otherwise, the points awarded will be staggered by the number of missing drivers. A category is:

- A subleague
- A group
- A division
- A class
- A challenge

Example: for a type rally France cup asphalt

Number of runners = 185 / groups = 6 / number of classes = 25

For group points: $185/6/2 = 15.4$ we rounded up integer > The groups will count less than 16 drivers at the start does not attribute all the points specified in the Regulation.

For class points: $185/25/2 = 3.7$ we rounded up integer > The classes that count less than 4 drivers at the start does not attribute all the points specified in the Regulation.

- **10.1 - Career ranking**

It will allow each driver to select 100 rally in the season in order to increment a specific collation.

The aim was to handle the career to be included in the classification of the same name, on a number of equal rally for each driver.

100 rallies for the year, represent 40% of all of the rallies organized by **Rallyesim** on the year.

These rallies are to select the previous Sunday at the latest a week of racing, and for the week commencing the following Monday. It will be possible to anticipate these selections at will, and change them. The only which may be modified, are that of the current week. The weather being public on **RScenter**, and on the page of the official sessions, it will be unable to target its selections in knowledge of the weather.

Annually, the quota has been fixed to allow purchasers of accounts of mid-season to play their card career despite the delay. Check a rally and succeed, will be the guarantee of a good career management.

Pour sélectionner vos « rallyes carrière », c'est ici que ça se passe



CAREER CALENDAR

A specific career ranking will be available for each Championship, thus classifying drivers' careerist of the Championship said. This ranking is based career to put the titles of each championship.

At the end of the year, the winner of the career classification should be titrated and will be assigned the No. 1 for the championship season.

A career ranking will be made for separate trials in Realistic and Reduced if and only if the drivers have checked in their career choice.

- **10.2 - Ranking stables**

The stables also have their classification. It will accumulate all of the points of the drivers of each team.

As in 2021 each driver will be able to count a rally a week for its team.

The mode of selection will be the same as for careers.

Last time, on Sunday before the race, but an organization within the stables will be required, as each event will not count to 6 drivers. If more drivers to choose the same rally in a week, only the top 6 point scorers will be retained. The surplus pilots will be able to ride, but they fight internally in their respective stables, getting more points than their teammates.

Pour sélectionner vos « rallyes Ecuries », c'est ici que ça se passe



- **10.3 - RALLYESIM classification**

This ranking will take into account all of the rallies organized by RALLYESIM. Each rally you make will go to add points. Points taken into account will be based on the same calculation as the career points, but with a different scale (multiplied by 2 in general, according to the championships).

- **10.4 - Scoring "Stables" / "Career" / «Rallyesim»**

In most leagues, the scales are

- Classification "Stables"
- In the 6 drivers per team and rally (the points of the 6 best drivers of each team will be retained if the number of selections is greater than 6 for the same stable) > * 2 times less points for the winner / * 2 times less markers)
- Classification "Career"
- If the rally is selected beforehand> Original Points Championship
- Classification "Rallyesim"
- All accrued rallies> Original Points Championship multiplied by 2 (* 2 times more points for the winner / * 2 times more markers)

* According to the original number of markers rewarded with the rules of each championship.

The career and stables points will be calculated after the reclassification of each actual ranking. These reclassifications do not take into account that the rally drivers who checked for any specific rankings (career and / or stables).

Points better time scratch by special will be awarded for each championship **and will be valid for rankings "Rallyesim", "career" and "Stables"**

- 3 points at the best time of special all confused.
- 2 points to the best times in each group.
- 1 point to the fastest time in each class.
- 3 Of these rewards are not cumulative, only the most important is

retained :

- General
 - Group

- Class

It is possible to select a rally for his team and his career.

- **10.5 - Participation Points**

Each completed rally will give you points for participation, to reward drivers who will rally the arrivals.

A rally is considered to be completed, if the driver knows not of abandonment in the last loop. If not, there will be no point in participation. These points of interests are attached to 2 with completed rally.

These points will count for career, stables and Rallyesim classification.

- **10.6 - Claims**

Each driver has the opportunity to object to a ranking within a period of 5 weeks.

To be accomplished, it must post on the subject of the rally which poses problem, in arguing his motion, and by sending a load of business, a control file containing all files of this race by using "SendReplays". Caseloads will do their job control, and adjust the defective classification as soon as possible if sufficient evidence is found to be admissible.

Where a driver finds, his time are not correct, the time is shortened to one week following the end of the rally. It is his duty to note these facts in the shortest time.

However, a ranking that requires a variable time to be updated, the administration reserves the right to do as time changes, and do not put the official ranking to date, that when limit checks are done, is 2-3 weeks more later.

- **10.7 - Controls based on race**

After each race, controls are organized. To be accomplished, a list is available in the section "[News RSCenter: information](#)" of the RSRBRlive homepage. This ad is called "checks races week...". ». She said for every rally of the previous week, pseudonyms and numbers of drivers who must send their race files for (s) Rally (s) they must do. These controls can be targeted or made at total random.

This sending files should be done by "SendReplays" within the time fixed and visible on the message "Checks races". **The sending time is one week.** The announcement message appears within 3 or 4 days after the end of the rally. Ideally the next day of the end of the rally. The list is scalable as receptions, the numbers and names of drivers who send their files will be removed from this list will be accompanied by a delivery status. Please refer to this list, which in addition to the message disappears from your personal space asking sending, tell you about the good progress of the shipment.

All files of race should be kept during a minimum period of 5 weeks

This mailing must contain all of the files below, "SendReplays" support to compress all of the files:

- All files (.rpl) replay of the completed stages > in the 'Replays' of the game directory folder.
- All INI files (.ini) of the completed stages > in the 'Replays' of the game directory folder.
- (S) file (s) HTML (.html) of the days of racing > in the "My7zfiles" folder in the game directory.
- 7Z (.7z) of race days files > in the "My7zfiles" folder in the game directory.

It will be more accepted of files other than by SendReplays. If for any reason you couldn't make the transmission, please connect to your manager, or anyone else likely to be able to do so on your behalf.

A subsidiary list can be made to request a new shipment of requested in a previous week, this 1^{er} sending files is not complete. It is therefore for each of each new list to ensure rules.

- **10.7.1 - How to use "SendReplays".**

"SendReplay" is a software built into RSRBR and RScenter. It is suitable for sending files of controls. You will find since the "[RScenter / Live / SendReplays](#)".

- For its use, just as the .rpl files / .html & .7z are in their places of origin of their recordings. You won't have that check them to send. If all goes well, a control file download link will appear after validation of the software to send.

- These files must be located in folders such as city, otherwise SendReplays will not be able to detect them, why it is necessary to be rigorous in the registration of the name of your replays to not fool you.
1. Will by default, your username and your number be selected automatically, while a menu you will propose the name of completed rallies.
 2. Select the replay files (left column) you must send the file 7z and .html (right column) and click on the button "[Send to Server](#)" for compression in a zip file in a 1^{er} time (image on the right) and then sent to the server in a 2nd time (image below).

Fill the 3 following fields imperatively

Number NickName
Rally Name



Check Only files that you to send

REPLAYS **All** None

Refresh

HTML & 7Z

- | | |
|---|---|
| <input type="checkbox"/> es2 beauges blue.rpl | <input type="checkbox"/> 4093-bluesky74_Rias_Baixas_Leg_2.html |
| <input type="checkbox"/> es2 leg1 cardabelle blue.rpl | <input type="checkbox"/> 4093-bluesky74_Ronde_de_la_Durance.7z |
| <input type="checkbox"/> es2 leg1 irc scotland.rpl | <input type="checkbox"/> 4093-bluesky74_Ronde_de_la_Durance.html |
| <input checked="" type="checkbox"/> es2 rd montbrison bluesky.rpl | <input checked="" type="checkbox"/> 4093-bluesky74_Ronde_Montbrisonnaise.7z |
| <input type="checkbox"/> es3 beauges blue.rpl | <input checked="" type="checkbox"/> 4093-bluesky74_Ronde_Montbrisonnaise.html |
| <input type="checkbox"/> es3 leg1 cardabelle blue.rpl | <input type="checkbox"/> 4093-bluesky74_Schutte_Informatisering_Hellendoor |
| <input checked="" type="checkbox"/> es3 rd montbrison bluesky.rpl | <input type="checkbox"/> 4093-bluesky74_Schutte_Informatisering_Hellendoor |
| <input checked="" type="checkbox"/> es4 rd montbri bluesky.rpl | <input type="checkbox"/> 4093-bluesky74_St_Goueno.7z |
| <input checked="" type="checkbox"/> es5 rd montbrison bluesky.rpl | <input type="checkbox"/> 4093-bluesky74_St_Goueno.html |
| <input checked="" type="checkbox"/> es6 rd montbrison bluesky.rpl | <input type="checkbox"/> 4093-bluesky74_Tarbes_Osmets.7z |
| <input checked="" type="checkbox"/> es7 rd montbrison bluesky.rpl | <input type="checkbox"/> 4093-bluesky74_Tarbes_Osmets.html |

Send to Server

Quit

Fill the 3 following fields imperatively

Number NickName
Rally Name



Check Only files that you to send

REPLAYS **All** None

Refresh

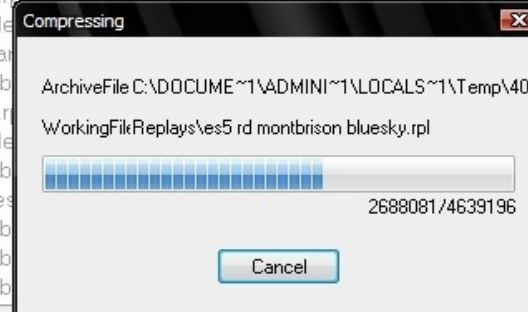
HTML & 7Z

- | | |
|---|---|
| <input type="checkbox"/> es2 beauges blue.rpl | <input type="checkbox"/> 4093-bluesky74_Rias_Baixas_Leg_2.html |
| <input type="checkbox"/> es2 leg1 cardabelle blue.rpl | <input type="checkbox"/> 4093-bluesky74_Ronde_de_la_Durance.7z |
| <input type="checkbox"/> es2 leg1 irc scotland.rpl | <input type="checkbox"/> 4093-bluesky74_Ronde_de_la_Durance.html |
| <input checked="" type="checkbox"/> es2 rd montbrison bluesky.rpl | <input checked="" type="checkbox"/> 4093-bluesky74_Ronde_Montbrisonnaise.7z |
| <input type="checkbox"/> es3 beauges blue.rpl | <input checked="" type="checkbox"/> 4093-bluesky74_Ronde_Montbrisonnaise.html |
| <input type="checkbox"/> es3 leg1 cardabelle blue.rpl | <input type="checkbox"/> 4093-bluesky74_Schutte_Informatisering_Hellendoor |
| <input checked="" type="checkbox"/> es3 rd montbrison bluesky.rpl | <input type="checkbox"/> 4093-bluesky74_Schutte_Informatisering_Hellendoor |
| <input checked="" type="checkbox"/> es4 rd montbri bluesky.rpl | <input type="checkbox"/> 4093-bluesky74_St_Goueno.7z |
| <input checked="" type="checkbox"/> es5 rd montbrison bluesky.rpl | <input type="checkbox"/> 4093-bluesky74_St_Goueno.html |
| <input checked="" type="checkbox"/> es6 rd montbrison bluesky.rpl | <input type="checkbox"/> 4093-bluesky74_Tarbes_Osmets.7z |
| <input checked="" type="checkbox"/> es7 rd montbrison bluesky.rpl | <input type="checkbox"/> 4093-bluesky74_Tarbes_Osmets.html |

Send to Server

Quit

... Compressing ...



SendReplays RSRBRLive2010 v.0.1

Fill the 3 following fields imperatively

Number NickName

Rally Name

Check Only files that you to send

REPLAYS [All](#) [None](#) [Refresh](#) **HTML & 7Z**

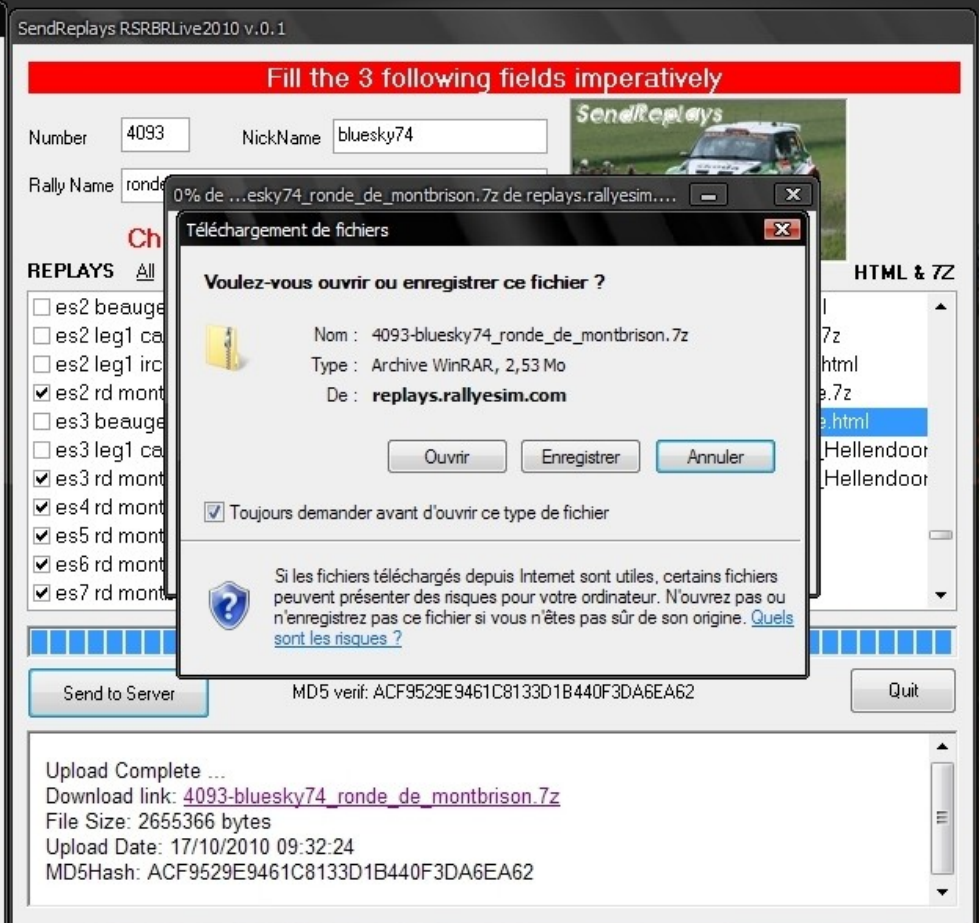
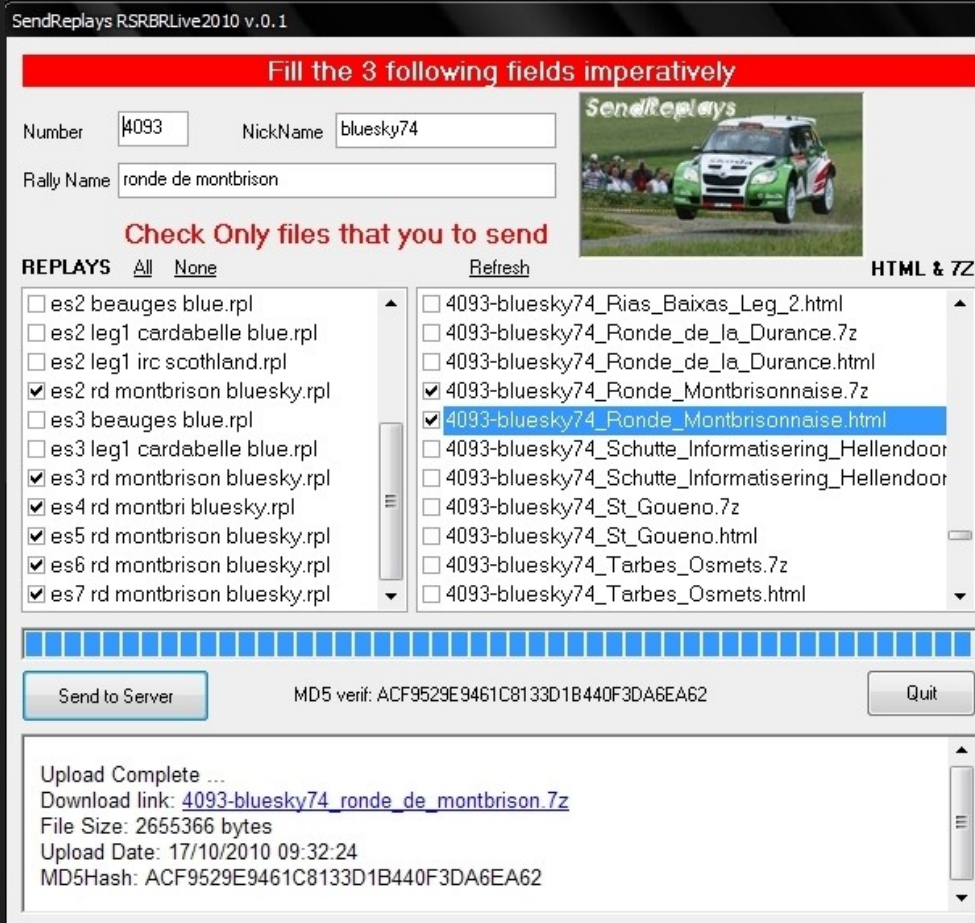
<input type="checkbox"/> es2 beauges blue.rpl	<input type="checkbox"/> 4093-bluesky74_Rias_Baixas_Leg_2.html
<input type="checkbox"/> es2 leg1 cardabelle blue.rpl	<input type="checkbox"/> 4093-bluesky74_Ronde_de_la_Durance.7z
<input type="checkbox"/> es2 leg1 irc scotland.rpl	<input type="checkbox"/> 4093-bluesky74_Ronde_de_la_Durance.html
<input checked="" type="checkbox"/> es2 rd montbrison bluesky.rpl	<input checked="" type="checkbox"/> 4093-bluesky74_Ronde_Montbrisonnaise.7z
<input type="checkbox"/> es3 beauges blue.rpl	<input checked="" type="checkbox"/> 4093-bluesky74_Ronde_Montbrisonnaise.html
<input type="checkbox"/> es3 leg1 cardabelle blue.rpl	<input type="checkbox"/> 4093-bluesky74_Schutte_Informatisering_Hellendoor
<input checked="" type="checkbox"/> es3 rd montbrison bluesky.rpl	<input type="checkbox"/> 4093-bluesky74_Schutte_Informatisering_Hellendoor
<input checked="" type="checkbox"/> es4 rd montbri bluesky.rpl	<input type="checkbox"/> 4093-bluesky74_St_Goueno.7z
<input checked="" type="checkbox"/> es5 rd montbrison bluesky.rpl	<input type="checkbox"/> 4093-bluesky74_St_Goueno.html
<input checked="" type="checkbox"/> es6 rd montbrison bluesky.rpl	<input type="checkbox"/> 4093-bluesky74_Tarbes_Osmets.7z
<input checked="" type="checkbox"/> es7 rd montbrison bluesky.rpl	<input type="checkbox"/> 4093-bluesky74_Tarbes_Osmets.html

Progress bar: 17%

Buttons:

... Sending ...

- When sending finished (100% on the image at the top), a control file download link will appear after **sending by software validation** (left image) you can click on it also. This allows you to save the file on your computer, and so to be able to return it if a problem had occurred on RALLYESIM server or simply to keep it and so empty your folder "Replay".



• 10.7.2 - Balance sheets based on race

After each end of the control stock of the checks is published on the subject of the rally.

These assessments tell what the Commissioners and directors will have seen during their investigations.

The experience of these controls has led us to name explicitly drivers who reproaches were made, as well as sanctions in the short or medium term. Keep anonymous the punished is found to be unnecessary and no further action, while his pseudonym, see a list of offending drivers directs more naturally "own rolling" and "respect the rules". You can view the information of each driver on the page "[RS drivers](#)" RSRBRlive 2023.

The release of a year-end review of audit also means that the classification becomes final, the results of the audits are taken into account.

11 - Penalties

- **11.1 - Additions of penalties:**

- Voluntary cut a corner or PIN with time : + 10 seconds per Cup on the special.
- Involuntary loss of control cutting : no sanction if exceptional cases > loss of control has remained a case isolated. If it is repeated several times during a special, it is the approach of the race is not good and should be sanctioned.
- More than 3 cups voluntary and repeated on the same special : flat-rate time on the special.
- Overall incorrect steering on the set of a rally : abandonment on the race implementation > DNF.

- **11.2 -Lack of files**

- HTML missing: 10 seconds penalty on last special of the rally.
- Missing 7z: 20 seconds of penalty on the last special of the rally.

- Missing replay: lump sum time on the special.
- Failure to send all files (html, 7z and replays): 2 cases:
 - The driver does not drive during the week where it is supposed to send its files: getting abandonment on the rally > DNF > Orange > not account blocking
 - The driver rolls (a single test) during the week where it is supposed to send its files: getting abandonment on the rally > DNF > Orange > blocking of his account during 1 week.

RALLYESIM information

The blocking of account due to a failure of the files is independent of the blocking of account due to the sanctions cited paragraph 11.4 was. It has direct effect of empowering drivers to limit controls. Remember to lighten your replay folder. Can result in the loss of some records.



• 11.3 - Sanctions

Any breach of the regulations will be punished by various levels of sanctions represented by color codes, and explained in a setting reserved for this purpose on the page "driver profile. It will find all information about its history of mistakes during the

season. All rallies on which each driver will have suffered a control will be marked. The level of penalty will change from **Green** to **Red**. It can in extreme cases, go to the **Black**. This color code displayed in the rankings, but during the session on the scalable of a rally standings page also. The **Black** being the sanction of the highest level, synonymous with end of formal sessions for the remainder of the season. This color should no longer appear in official sessions since the pilot account is blocked.

• **11.4 - Levels of sanctions & sanctions**

Level 0 : Not sanctions (sanctions may not have cardboard attached, but only the penalties on the controlled rally time.)

- Cup light (**10 seconds per cup**).
- Lack of HTML files or 7z (**penalty 10 seconds for missing HTML^{*} / penalty 20 seconds for 7z missing^{*}**).

^{*}A penalty for HTML and/or missing 7z is automatically applied to the last special of the rally concerned.

Level 1

- Replays files missing in the 50% limit (**abandonment on the Special layout missing**).
- Car settings invalid to the extent of 50% (**abandonment on the special formatting invalidated**).
- Multiple and voluntary cuts (**time lump on the special beyond 3 cups on this same special**).
- Check "Kamikaze" (**fixed time on the stage**).

Level 2

- Replays files missing over 50% (**implementation abandonment > DNF**).
- Car settings invalid beyond 50% (**implementation abandonment > DNF**).
- Outrageous cuts turns (**1 single cup considered outrageous can lead to this level of sanction**).

Level 3

- Accumulation of several consecutive penalties (account blocked on Sunday following the finding of facts and this week > Blocked account).

Level 4 : If the pilot demonstrated ill will due to one or more of the previous penalties, then his driver account will be blocked for the remainder of the season. Other associated accounts as the public account (access to public sessions) can also be blocked. This penalty up to and including the unresponsiveness of the computer for any relationship with Rallyesim.

The sanctions are cumulative throughout the season

The culmination of the sanctions lead to blocking of drivers accounts levels

RALLYESIM information

- In the event that a driver know before be controlled that one or more of its files are missing, it can prevent an administrator or moderator Championship which will take note of apology. The abusive repetition of this fault will be penalized. An online tool to report these oversights is available. It is tolerated by the pilot and three years as omissions (1 stage = 1 oblivion)
- "contre-sanctions" are planned. That is, the level of punishment will be recalculated for the benefit of the driver if it's evidence of taking into consideration the allegations previously.
- **If facts are repeated, the penalty levels originally planned will be doubled.**

Example:

1st convening in the control > the driver sends no replays > = 2 level of sanction regulation > ■■

2nd convocation in the control > the driver always sends no replays > 2 additional levels of sanction > ■■ + ■■
= ■■ (account 1 week block)

The sanctions remain at the discretion of the team of Auditors

12. SUMMARY OF QUALIFICATIONS TO THE FINALS

Some competitions take place in the form of Cup (Cup of France rally asphalt). By definition, a gives rise to a final cut. This finish is accessible if drivers manage to qualify according to the selection criteria imposed by the specific regulation.

13. COMMISSIONERS RACE

From the beginning of the season, a team of Commissioners is set up, conducting audits according to race. Everyone is free to request its integration to this team.

A Commissioner's race is not decision-making.
He gives his opinion, and relies on administrators for decision making.

The Commissioners are also checked on the work.
If they provide no adequate analysis, they will be sanctioned and excluded from the team of Auditors.

Each driver is free to request control of another driver, if he thinks this justified control.

14. AMENDMENT OF THE PRESENT REGULATIONS

The administration takes home the possibility of amending this regulation, as well as the specific regulations of one or other of the Championships if an article was inapplicable, or inappropriate to RALLYESIM Championships. Necessary ads will be then published to notify all of the drivers without giving them the right to challenge the content (s).

A page is dedicated to these possible changes.

[Access to the specific regulations](#)

Think about the ASSOCIATION,
make a Donation